

Hillcross Primary School

Welcome to the
Early Years Foundation Stage
at
Hillcross Primary School



School Readiness & Stay & Play

Nurturing our children to think critically and creatively within a collaborative community.



Nurturing our children to think critically and creatively within a collaborative community.
School Values: aspiration, challenge, compassion, responsibility and respect

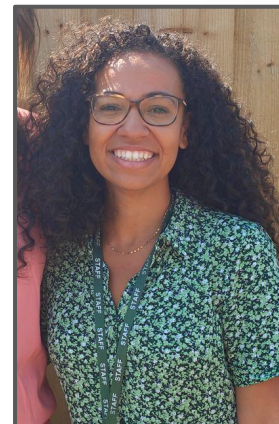


The Nursery Team

Every child will have a key worker assigned to them once they have started at nursery.

Class Teacher (Key worker)

Almaz Morris



Early Years Practitioners (Key Worker)

Louise Ephgrave

Lucy Young



PPA cover will be provided by EYFS staff- Claire Bright, Katie and Courtney

Nurturing our children to think critically and creatively within a collaborative community.
School Values: aspiration, challenge, compassion, responsibility and respect

Respect

Understanding differences and valuing everyone.

At Hillcross every child is unique and special.

- Every child will be assigned a key worker. This helps children to form close relationships with a particular member of staff and also allows parents to have a familiar adult to share success, concerns or worries with.
- In nursery, there is a ratio of 1 adult to 13 children.



Nurturing our children to think critically and creatively within a collaborative community.
School Values: aspiration, challenge, compassion, responsibility and respect

Collaboration

Working together to achieve more.

Working with Families

We work alongside families to nurture and develop every child through a holistic approach to teaching and learning. In the Early Years, development of a child's Personal, Social and Emotional and Self Help/Care skills are fundamental in order to lay strong foundations for lifelong learning. There are many ways in which families can support their child's transition into nursery, which includes encouraging them to be increasingly independent such as putting on their own coats and using the toilet. If children find any aspect of self-care tricky, the nursery team will support them - we encourage parents to share openly with us as soon as possible or during home visits so that we can best meet the needs of all children.



Nurturing our children to think critically and creatively within a collaborative community.
School Values: aspiration, challenge, compassion, responsibility and respect



Collaboration



Working together to achieve more.

Who else supports learning?

At Hillcross we work with many professionals, across a range of services, who also offer support to our children and families. These include:

- NHS services such as GPs, Health Visitors, Occupational Therapy, Speech and Language.
- Educational Psychology, Social Care, Educational Welfare Officers and CAMHS - we have have a CAMHS in school clinician weekly.
- The local community via workshops and trips such as the library, Morden Hall Park, local shops and the farm.
- Family members who regularly volunteer or share specific skills/information related to events and celebrations.

Nurturing our children to think critically and creatively within a collaborative community.

School Values: aspiration, challenge, compassion, responsibility and respect

Attendance and Punctuality



- **Attendance** at school is paramount to ensuring your child continues to learn and develop. If children miss sections of their learning it can become difficult to ensure they catch up on missed skills. **Children benefit greatly from consistent periods of time in school.**
- **Punctuality** is also crucial to ensuring a relaxed and smooth start to the day. The staff will carry out specific work every morning with the specific children, so please try to arrive as close to **8.30am** as you can.
- **School starts at 8.30am each morning (indicated by the school bell).**
- **At 8.45am a second bell rings and this means that all classroom doors and school gates will be locked.** Registers are closed so if you arrive on or after the second school bell you will need to take your child to the school office to sign in and they will be recorded as late- this can upset children greatly too.
- **School finishes at 3pm, gates will open soon before.** Children will be dismissed directly from their class doors to a known adult. If someone different is collecting your child, please inform staff beforehand as we will not let children go with another adult without your permission - they will also have to know the unique safeguarding password that you put on your school admissions form.
- **School gates are closed at 3.10pm** so if you do not enter and exit between these times, you will have access to the Ashridge entrance only.

Nurturing our children to think critically and creatively within a collaborative community.

School Values: aspiration, challenge, compassion, responsibility and respect

School Uniform



Nursery children need to be dressed in clothes that they can fasten and unfasten themselves. They should be free of any belts to ensure they are able to use the toilet independently.

Uniform for nursery & reception is compulsory however, we do offer a more casual option as the EYFS children spend the majority of their day involved in high quality, play based, active learning opportunities. These take place within the indoor and outdoor learning environment. The more casual uniform option for EYFS children will allow them to run and climb safely, as well as develop independence. You may choose to mix both options as appropriate but **plain black** trainers (velcro fastening is best) are the preferred option for children's footwear. [Click here to be directed to our uniform providers link.](#)

Other compulsory school uniform Items

- All children in EYFS and KS1 should have a Hillcross School Book Bag* or small Hillcross School Rucksack*
- All children should have a school water bottle with a maroon coloured lid.

** All children will need a waterproof coat throughout the year and a Sun hat when the weather is sunny.*

Recommended Uniform - EYFS	
<ul style="list-style-type: none"> Black tracksuit bottoms (no leggings). White or maroon short sleeved polo shirt (with or without logo). White, grey or black socks. Black trainers (no additional coloured marking) with Velcro fastening (no plimsolls). Maroon long sleeved cardigan or V-neck sweatshirt with school logo. 	
Optional Winter Uniform	
<ul style="list-style-type: none"> Maroon long sleeved cardigan or V-neck sweatshirt with school logo. White or maroon short sleeved polo shirt (with or without logo) or white shirt/blouse. Grey pinafore dress, skirt, skort or tailored trousers. White, grey or black socks or tights (no leggings). Black shoes (not sling-back, open toed or heeled). No boots, canvas pumps or trainers. 	
Optional Summer Uniform	
<ul style="list-style-type: none"> Grey school shorts. Pink/white or red/white checked summer dress (no all in one or 'hybrid' versions please). White/black closed toe leather sandals. 	
Compulsory Uniform Items	
<ul style="list-style-type: none"> Maroon Hillcross Logo Book Bag (EYFS & KS1) or small Hillcross School Rucksack. 	
Optional Uniform Items	
<ul style="list-style-type: none"> Reversible Fleeced Lined Jacket. Fully Zipped Fleece. 	

Please remember to label all items of your child's uniform - this includes shoes, lunchboxes and water bottles.

Nurturing our children to think critically and creatively within a collaborative community.

School Values: aspiration, challenge, compassion, responsibility and respect



Responsibility

Taking ownership of all we do.



P.E.

- **Uniform for Nursery & Reception is compulsory.** We recommend the more casual option identified in the policy because the children in this phase spend the majority of their day involved active learning opportunities, inside and outside. The casual uniform option allows the children in nursery and reception to run and climb safely, as well as develop independence in dressing and undressing. However, children in Nursery and Reception may choose the more traditional uniform worn by the rest of the school or a mixture of both. Plain black trainers (velcro fastening) are the preferred option for children's footwear until they can tie their own laces/manage their own buckles.

Branded school uniform items can be ordered through the online school uniform shop at
<https://www.mapac.com/education/parents/uniform/hillcrossprimarySM4>

Reception PE Kit	
<ul style="list-style-type: none">• PE sweatshirt with school logo.• White t-shirt with round collar.• <u>Plain black</u> jogging bottoms or thick black leggings (no logos).• <u>Plain black</u> shorts or thick black cycling shorts (no logos).	

Nurturing our children to think critically and creatively within a collaborative community.
School Values: aspiration, challenge, compassion, responsibility and respect



Responsibility

Taking ownership of all we do.

Snacks and Drinks

We are proud to have achieved the Healthy School Gold award and believe it is vitally important that children understand how to be healthy. All children benefit from a balanced diet, which includes plenty of water and fruit/vegetables, alongside their three main meals. Food gives the children the energy they need to fully engage with learning at school and we urge all families to ensure their children have eaten a healthy meal before coming to school. Throughout the nursery session the children have access to fresh fruit and their Hillcross water bottles are stored in the cafe area for easy access.

Fruit	Fresh fruit is provided free of charge to all children under seven years old by the government. Fruit options include; apples, satsumas, pears, tomatoes, bananas, raisins and carrots. All fruit is washed but we do not peel or chop the fruit. Children are encouraged to go and eat at least one piece of fruit a day from the café.
Water	The children have access to fresh drinking water throughout the day within the Reception Café. In the warm weather we ensure that we have an additional café set up outside for the children to access. We do not allow juice during the school day, however this can be provided for lunchtimes.
Milk	<p>The 1st January 2016 marked the first anniversary of the new School Food Standards. As part of the standards, there is legislation that stipulates that <i>all children in primary school education must be provided with the option of lower fat drinking milk during school hours.</i></p> <p>Children will be encouraged to drink milk but we do not keep a daily record of who has drunk their milk.</p>

Nurturing our children to think critically and creatively within a collaborative community.
School Values: aspiration, challenge, compassion, responsibility and respect

Collaboration

Working together to achieve more.

School readiness

Preparing your children for coming to school.

- Say goodbye- trust
- toileting- managing own clothes.
- managing care- putting on coat, shoes
- Prime areas are incredibly important to ensuring the children are ready to learn when they transition into Reception.
- Eating lunch- opening packets/ feeding themselves

Nurturing our children to think critically and creatively within a collaborative community.

School Values: aspiration, challenge, compassion, responsibility and respect



Aspiration

Reach for the sky and aim high!

The EYFS Curriculum



The EYFS curriculum initially focuses on the Prime Areas of learning to begin with. The Prime Areas are:

Communication and Language Development - Listening and attention, Understanding, Speaking.

Physical Development - Moving and Handling and Self confidence and self awareness.

Personal, Social and Emotional Development - Self Confidence & Self Awareness, Managing Feelings & Behaviour and Making Relationships.

Once the children have met age related expectations within the Prime Areas areas, they are ready to learn within the Specific Areas. Specific Areas of development are:

Literacy - Reading and Writing.

Maths - numbers and Shape, Space and Measure.

Understanding the World - People & Community, The World & Technology

Expressive Art and Design - Exploring and using Media and Materials and Being Imaginative.

Nurturing our children to think critically and creatively within a collaborative community.

School Values: aspiration, challenge, compassion, responsibility and respect

Aspirations

Reach for the sky and aim high!

Learning and Development

- We believe in the importance of **play**. Children are encouraged to follow their own interests and staff skillfully develop the children's knowledge and skills as they do so. In line with best practice we promote high levels of child initiated learning (approximately 80%) with adult directed learning taking up the remaining amount of time.
- They will have access to a range of toys and equipment which will include resources such as scissors, staplers, glue and sticky tape - we will help children to use these safely and appropriately if they do not already know how to.



Nurturing our children to think critically and creatively within a collaborative community.
School Values: aspiration, challenge, compassion, responsibility and respect



Learning through play.



Aspiration

Reach for the sky and aim high!

Assessment

In Early Years, we use an observation-based assessment system to collect evidence on individual children's learning and development. Evidence in the form of photographs, videos and written observation are collected across the day on all children within a variety of situations: child initiated activities; adult directed learning; outside learning sessions; inside play experiences and groups sessions.

All evidence is then used to build a holistic picture of a child's ability and allows us to see their progress, over time, for all areas of learning and development.

Parents are invited to share their child's learning at

- Parents evening- October & February- offering you a 10 mins face to face or virtual appointment.
- Progress celebration evenings at the end of each term, where you can come into the unit and look at your child's Learning Journey Scrapbook

Nurturing our children to think critically and creatively within a collaborative community.

School Values: aspiration, challenge, compassion, responsibility and respect



Challenge

We don't grow when things are easy, we grow when we face challenges.



Typical day

Time	Focus - Universal pm/am children	Time	All day children - PM focus
8.30/ 12.15	Self registration - free flow learning	12.15	PM registration - Lunch ends
9/12.30pm	Wake up! Shake up!	9/12.30pm	Wake up! Shake up!
9.10/12.40	Whole class learning - carpet time/ song time	9.10/12.40	Whole class learning - carpet time/ song time
9.25/12.55	Free flow Independent play and learning time- Outside area open. Small groups/ adult led activities and interactions will happen.	12.55pm	All day children visit different rooms around the school- Library/ Computing suite/ studio hall/ allotment/ music room
11/ 2.25	Tidy up Time-	11/ 2.25	Tidy up Time-
11.10/2.35	Story/ song time -Collect belongings to go home or or get ready for lunch.	11.10/2.35	Story and song time -Collect belongings to go home

Nurturing our children to think critically and creatively within a collaborative community.
School Values: aspiration, challenge, compassion, responsibility and respect



Compassion

Care about others, treat them with kindness, act with empathy.



You Can Do It!



Confidence

Persistence

Organisation

Getting along



The children learn about these attributes throughout each nursery session and via circle times, group activities and collective worship. Adults ensure children have a sound understanding of the meaning of each word and children are praised for demonstrating behaviours linked to each area. Children accumulate virtual tokens and receive rewards for developing positive habits.

Nurturing our children to think critically and creatively within a collaborative community.

School Values: aspiration, challenge, compassion, responsibility and respect

Preparation Over the Summer



- Read regularly with your child - at least once every day. Discuss the meaning of new and interesting vocabulary. Please see our [website here](#), from more support.
- Help your child to develop their Gross and fine motor skills- taking them to the park, playing ball games, drawing and swimming are great activities. More support can be found on our [website](#).
- Maths in the Early Years is all about exploring number and quantity as well as practising our subitising skills. Please see [our website](#) and [parent guide to Maths](#) in EYFS for help and support.
- Most importantly talk to your child! Talk is the most powerful tool and we must develop the children's skills in speaking in a complete thought or idea, as well as understanding how to hold a reciprocal conversation. [More support can be found here](#).

Home Visit

- Every family that is new to Hillcross is offered a home visit. These visits are a valuable first step in getting to know you and your child. By visiting them at home, the children see us as safe adults and the bonds of trust are developed more quickly back in school. We also use this visit as a time to get to know your child on a more personal level.

Please have the following information ready to share with us:

- Birth certificate
- Two Year Check (preferably a copy we can take away with us)
- Any medical referrals
- Red book to check all immunisations are up to date and developmental records.

Last But Not Least

- Look round EYFS Unit.
- Ensure you are able to make the Home visit
-
- Complete the 'Getting to know Your Child' form so we can discuss this with you on the home visit.

The staff will be happy to help with any queries. Enjoy the rest of the session.

