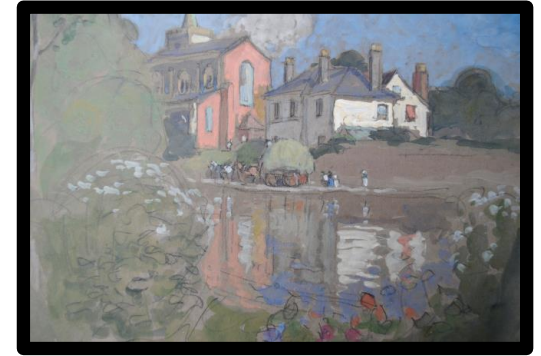


This week, you are going to create work in order to answer the following question:

As artists, we are learning to improve mastery of art and design techniques, including drawing and painting



Carshalton Ponds
1902-1912

As scientists, we are learning to describe how we hear different sounds.

Who was the artist Hoarse Mann Livens and why was he famous?

As geographers, we are learning to compare and contrast the local area with different parts of the world.

As historians, we are learning to make connections between local and international history.

To help you answer the question are key skills which you need to use in your learning this week.

Art ideas: How did Hoarse Mann Livens create the Painting Carshalton Ponds?

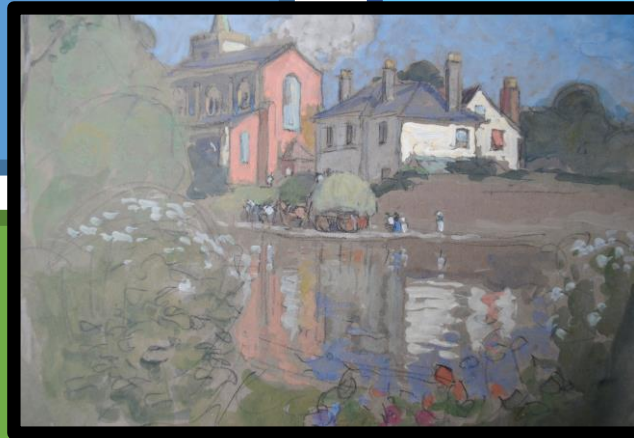
- Create your own version of 'Carshalton Ponds'.
- Create different shades of green. You could use paint, colouring pencils or crayons.
- Look at different paintings of Carshalton and sketch some examples.
- Try tea-staining a sheet of paper and trying to copy the picture.
- Research Hoarse and his links to Van Gogh.

Useful links:

<https://www.tate.org.uk/art/artists/horace-mann-livens-1520>

<https://artuk.org/discover/artists/livens-horace-mann-18621936>

https://www.louisekosman.com/artists/artist_304.php



Carshalton Ponds

Hoarse Mann Livens

Science ideas: How do we hear sounds?

- Create a diagram of the ear and label the different parts.
- Create a comic strip about how we hear.
- Pretend to be a scientist and explain the process to your family, can you record a video and turn it in?
- Create a poster about different pitches and sound waves.
- REMEMBER to apply your past knowledge from your learning at school.

Useful links:

<https://www.youtube.com/watch?v=HMIXoHKwWmU8>

<https://www.nidcd.nih.gov/health/journey-of-sound-video>

History ideas: What were the key events happening in Carshalton and Antwerp between 1902 and 1912?

- Create a timeline of the key events in the history of Carshalton and Antwerp.
- Compare and contrast Hoarse Mann Livens and Van Gogh.
- Create a fact file on Hoarse Mann Livens..

Useful links:

<https://whitehallmuseum.wordpress.com/2019/04/12/object-of-the-month-april/>

<http://www.vangoghletters.org/vg/letters/let569/letter.html#translation>

Geography ideas:

What are the physical and human features of Carshalton and Antwerp?

- Draw a map of Carshalton or Antwerp and label the human and physical features.
- Draw and label the water course of the River Wandle.
- Create a thinking map to compare and contrast the two areas.

Useful links:

<https://www.visitantwerpen.be/en/home>

<https://en.wikipedia.org/wiki/Carshalton>

https://kids.kiddle.co/River_Wandle

Other things you may wish to explore:

- Vincent Van Gogh and how he influenced other artists
- Other famous local artists/authors
- Other places Hoarse Mann Livens lived and how they influenced his art work.