



War of the Worlds.

How can I write a positive song using lyrics and melody?

What were the purpose of songs during the war?

- Music and songs helped people cope during the war years.
- Music and songs were written to keep spirits up and think positively about the future.
- Composers used humorous, positive and repetitive lyrics that people could sing along to.
- Melodies had an upbeat tempo that people would enjoy listening too and keep up moral.

Why was Vera Lynn so important during WW2?

- Vera Lynn (1924-2020) was an English singer, songwriter and entertainer whose musical recordings and performances were very popular during the Second World War.
- She hosted a radio show where troops and family members could send messages to each other.
- She went into war zones to entertain the troops.
- Two of her most famous songs were:
 - "We'll meet again"
 - "The White Cliffs of Dover"



Key Vocabulary

Structure – how a piece of music is put together.

Melody – the tune of a piece of music.

Lyrics – the words in a song

Fortissimo – loud

Piano – quiet

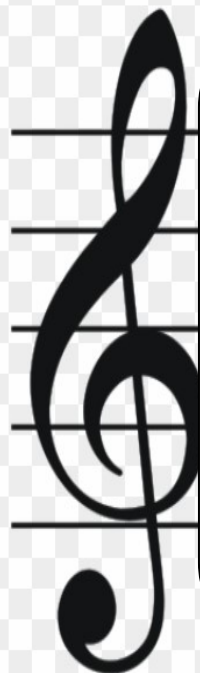
Diminuendo – getting quieter

Crescendo – getting louder

Tempo – the speed of a piece of music

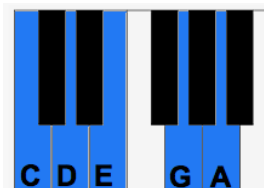
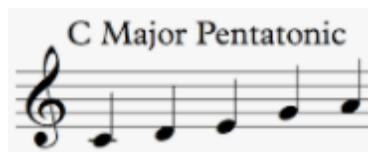
Presto – fast tempo

Largo – very slow tempo



How can I create my own melody using a pentatonic scale?

1. Use the syllables in your chorus and verse to create rhythm.
2. Create a melody using the rhythms and notes in the pentatonic scale (CDEGA)
3. Evaluate, edit and improve your song by changing the tempo, dynamics and structure of your piece.



Applying Past Knowledge

This learning links with the lessons you had in year 5 learning about chord progression and songs.

How can I create my own lyrics inspired by Vera Lynn?

1. Think of a subject that people need to remain positive about (e.g. COVID pandemic/SATs)
2. Use a circle map to think of red and yellow hat thoughts about your subject.
3. Write a verse and chorus in the style of a poem using these ideas. It could rhyme. Your chorus will repeat after each verse.

