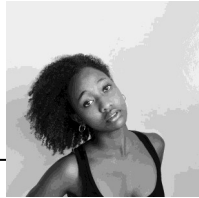




A Journey to Discovery

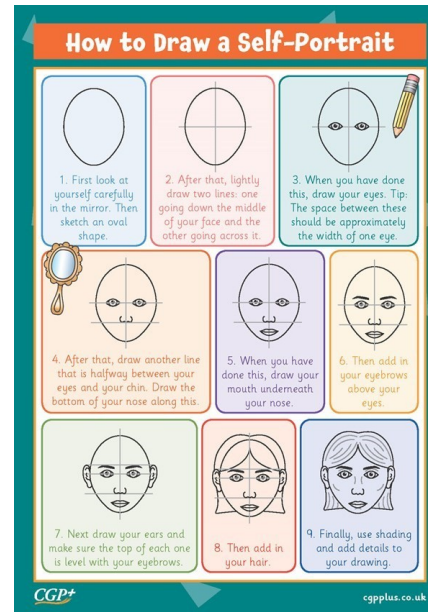
1. Who is Gloria Mwange?

She is a young artist from Kenya, Africa. She specialises in creating self-portraits using either pencil or watercolours. The Nala Project Exhibition in Nairobi was her first major exhibition.



How can I use line and tone to create a portrait?

2. How do I draw a portrait?



3. How can I use a pencil to create tone?



4. How can I add tone to my portrait?

For darker areas of the face e.g. the side of the nose, the hair and the eyes then a darker tone is needed where as lighter areas, for example, the cheeks need a lighter tone.

Key Vocabulary

Line- a mark made on the surface that joins different points.

Tone-the lightness or darkness of colour.

Proportion- relation based on size between parts of an object.

Self-portrait-when an artist draws a picture of themselves.

