



STRUCTURE - the different sections of a piece or music and how they are ordered.

Typical Pop Song Structure

Intro – Verse 1 – Verse 2 – Chorus – Verse 3 – Middle 8/Bridge – Verse 4 – Chorus – Outro

1. Can I use musical vocabulary to describe the purpose of a piece of music?

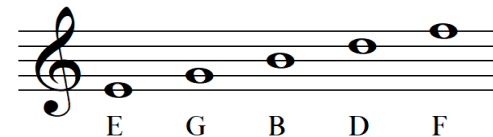
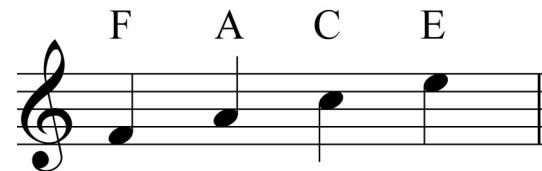
Intro
The introduction sets the mood of a song. It is often instrumental but can occasionally start with lyrics.
Verses
Verses introduce the song theme. There are usually new lyrics for each verse which helps to develop the song's narrative
Choruses
All the choruses usually have the same lyrics. This section relays the main message of the song.
Middle 8/Bridge
This section adds some contrast to the verses and choruses by using a different melody and chord progression.

Vocabulary Bank	
Breathing	<i>The process of taking air in and out of the lungs.</i>
Posture	<i>The correct way to stand whilst singing.</i>
Call & Response	<i>A musical conversation.</i>
Scales	<i>A set of notes played in succession.</i>
Movement	<i>An act of moving.</i>
Pitch	<i>How high or how low a sound is.</i>
Crescendo/ Diminuendo	<i>Gradually getting louder/quieter.</i>
Tempo	<i>How fast or slow we play the music.</i>
Dynamics	<i>How loud or quiet we play the music.</i>

2. Can I sing with expression and dynamics?

Add light and shade to singing by using whole body gestures, as well as emphasising words and change the pitch and dynamics.

4. How can we use standard notation to show melody?



Every Good Boy Does Fine

3. Can I sing in parts?

Sing in harmony with others, then move to pieces where we split into groups and sing something different at the same time.

5. Can I play a melody from notation?

LONDON BRIDGE IS FALLING DOWN,



FALLING DOWN, FALLING DOWN.



LONDON BRIDGE IS FALLING DOWN,



MY FAIR LADY!

