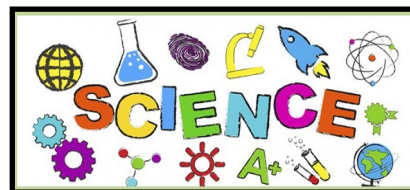




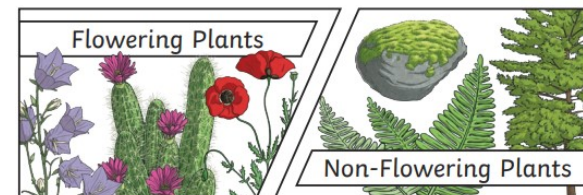
# Journey Over Europe: What Impact Do We Have On Our Environment?

Classification Key	Animals can be divided into groups or 'classified' by looking at the similarities and differences between them.
Environment	The surroundings or conditions in which a person, animal, or plant lives .
Amphibians	A cold-blooded vertebrate animal that comprises the frogs, toads, newts, salamanders, and caecilians.
Reptiles	a vertebrate animal of a class that includes snakes, lizards, crocodiles, turtles, and tortoises. They are distinguished by having a dry scaly skin and typically laying soft-shelled eggs on land.
Mammals	A warm-blooded vertebrate animal of a class that is distinguished by the possession of hair or fur, females that secrete milk for the nourishment of the young, and (typically) the birth of live young.
Vertebrates	An animal of a large group that has a backbone or spinal column, including mammals, birds, reptiles, amphibians, and fish.
Invertebrates	An animal lacking a backbone.



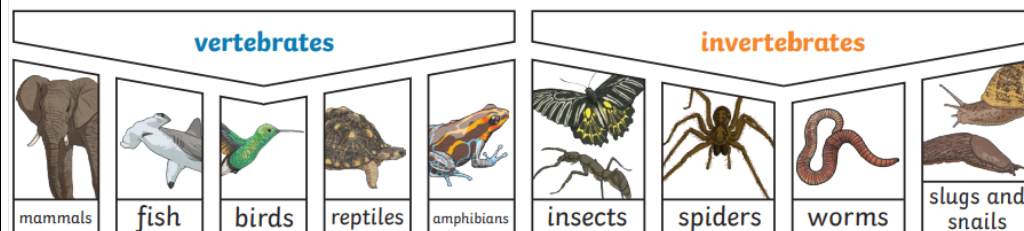
## 1. How can we group living things?

Plants can be sorted into many different groups. For example:



## 2. How else can I group animals?

Animals can be grouped in lots of different ways based upon their **characteristics**.



**Vertebrates** can be separated into five broad groups.

You could sort **invertebrates** you might see around school in different ways, such as in this example. The vast majority of living things on the planet are **invertebrates**.

## 4. How do humans affect our environment?

### Negative impacts:

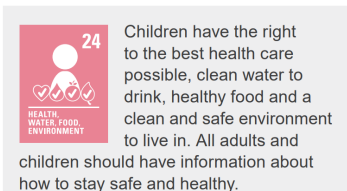
- Pollution
- Deforestation
- House building

### Positive impacts:

- Nature reserves
- Parks
- Garden ponds
- Plants

## 5. As global citizens, what could we do to have a positive impact on our local environment?

Discuss roles and responsibilities for the environment and protecting it.



## 3. What animal is it?

### Invertebrate Classification Key

