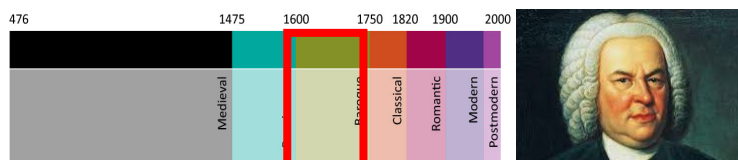
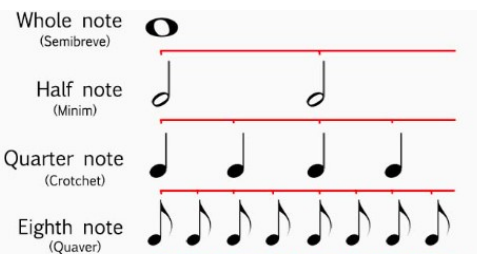


**How can I create scary music?****What are the features of Bach's Fugue and Toccata?**

- The baroque era of music is from 1600—1750.
- The composer of **Fugue and Toccata** is **Johann Sebastian Bach** who was a German Baroque composer.
- Fugue and Toccata It's written in two sections: **the Toccata** (meaning "to touch") uses lots of fast scales and broken chords; **the Fugue** uses complex overlapping repetitions of a main theme.

Key Vocabulary**Dynamics**—volume**Fortissimo**—loud**Piano**—quiet**Diminuendo**—getting quieter**Crescendo**— getting louder**Tempo**—speed**Structure**— the arrangements and order of different parts.**Can I sing, play and compose a Fugue and****Toccata?****Playing and composing with increasing accuracy**

- Listen carefully to people in your group.
- Have a conductor in the group to help you keep in time with your group.
- Discuss the structure carefully so you all know when to play and when not to.
- Communicate with your group so you are working collaboratively towards one piece.

Applying Past Knowledge

This learning links with year 5: composition using dynamics, pitch and tempo.

**Can I play a Toccata and Fugue**

- **Toccata** means 'touch'.
- A toccata is a piece with a lot of fast notes
- **Fugue** is a musical shape similar to a round but much more complicated.

