



Health and Safety



Do's

Protect your environment by making environmentally friendly choices.

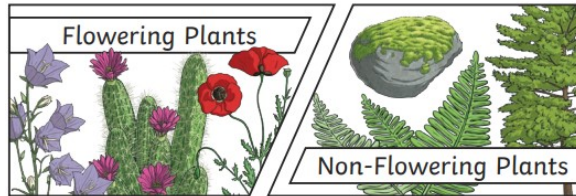


Don'ts

Damage any animals habitats or environments.

1. How can we group living things?

Plants can be sorted into many different groups. For example:



4. How do humans affect our environment?

Negative impacts:

- Pollution
- Deforestation
- House building

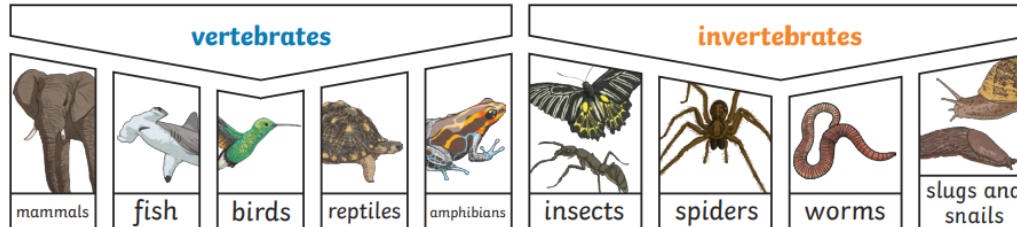
5. How do humans affect our environment? Positive impacts.

- Nature reserves
- Parks
- Garden ponds
- Plants

Classification Key	Animals can be divided into groups or 'classified' by looking at the similarities and differences between them.
Environment	The surroundings or conditions in which a person, animal, or plant lives.
Amphibians	A cold-blooded vertebrate animal that comprises the frogs, toads, newts, salamanders, and caecilians.
Reptiles	a vertebrate animal of a class that includes snakes, lizards, crocodiles, turtles, and tortoises. They are distinguished by having a dry scaly skin and typically laying soft-shelled eggs on land.
Mammals	A warm-blooded vertebrate animal of a class that is distinguished by the possession of hair or fur, females that secrete milk for the nourishment of the young, and (typically) the birth of live young.
Vertebrates	An animal of a large group that has a backbone or spinal column, including mammals, birds, reptiles, amphibians, and fishes.
Invertebrates	An animal lacking a backbone.

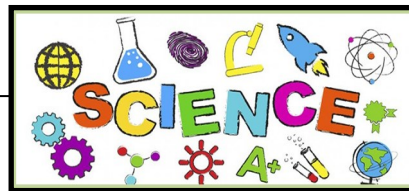
2. How else can I group animals?

Animals can be grouped in lots of different ways based upon their **characteristics**.



Vertebrates can be separated into five broad groups.

You could sort **invertebrates** you might see around school in different ways, such as in this example. The vast majority of living things on the planet are **invertebrates**.



24 Children have the right to the best health care possible, clean water to drink, healthy food and a clean and safe environment to live in. All adults and children should have information about how to stay safe and healthy.

3. What animal is it?

Invertebrate Classification Key

